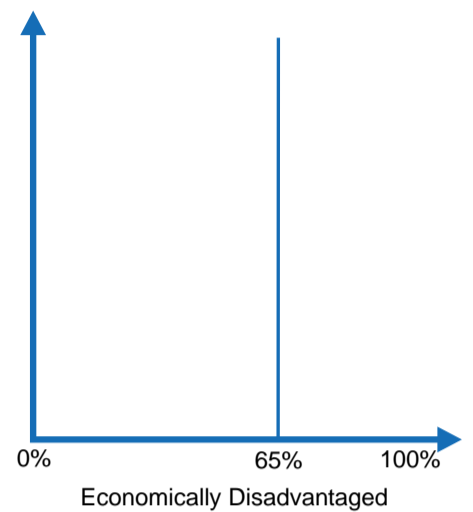
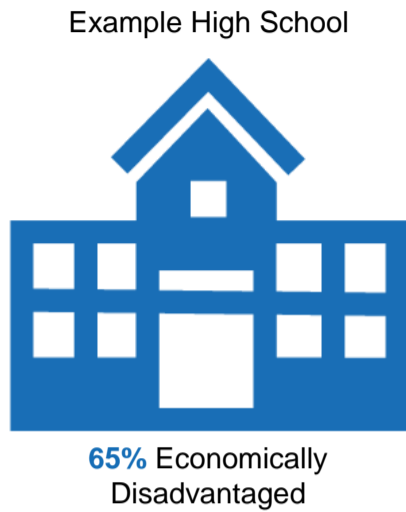


Relative Performance K-12 and High Schools

Step 1

Determine the Percentage of Economically Disadvantaged Students

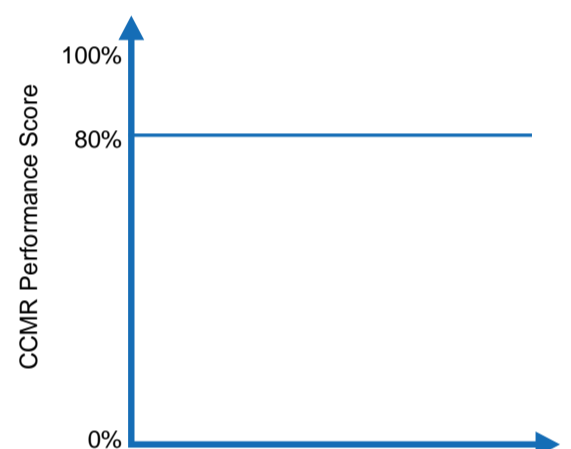
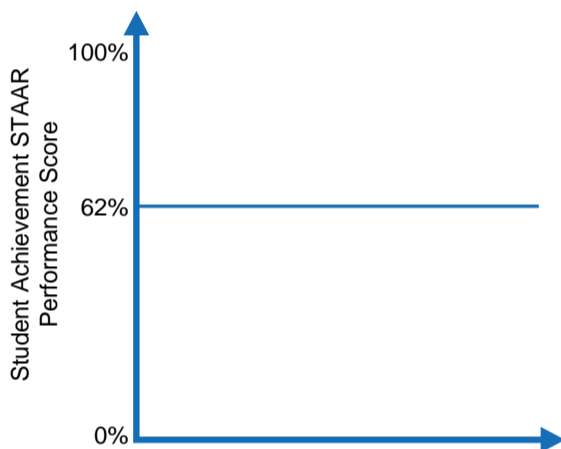
The percentage of economically disadvantaged students will be represented on the x-axis.



Step 2

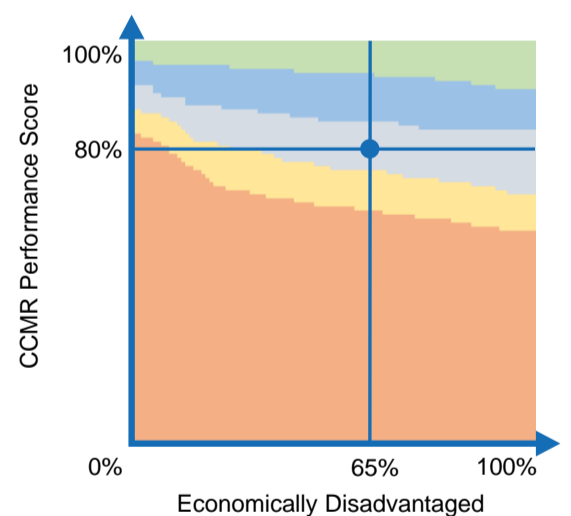
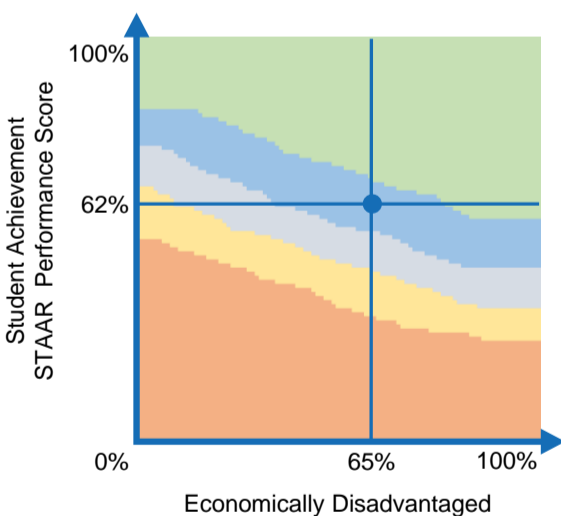
Calculate the STAAR and College, Career, and Military Readiness (CCMR) Performance

The STAAR and CCMR performances will be represented on the y-axis



Step 3

Plot* the Percentage of Economically Disadvantaged Students and the STAAR and CCMR Performance Scores



*The graphs used in this example are for demonstration purposes only.

Step 4

Determine the Relative Performance Score by Calculating the Average of the STAAR and CCMR Performance Scores

